

DÜYEK

SULTÂNİYEGÂH ŞARKI

SÜRE = 3' 12"

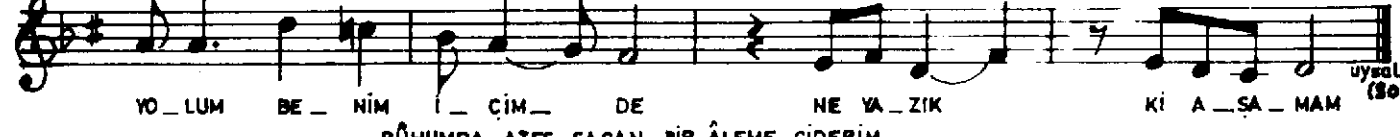
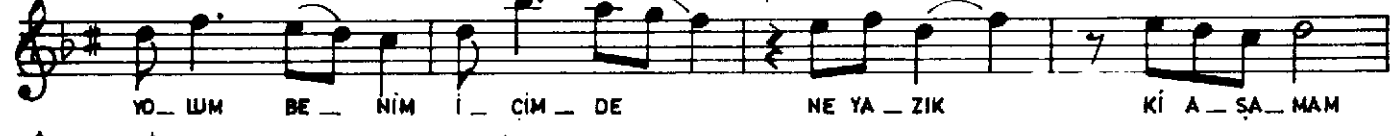
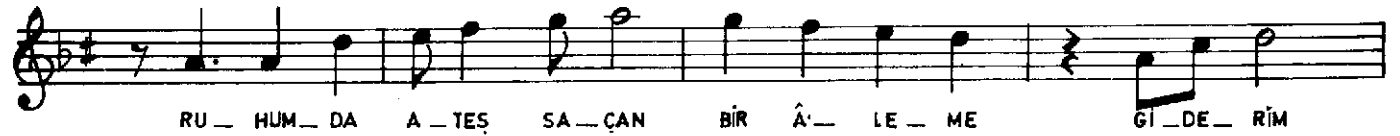
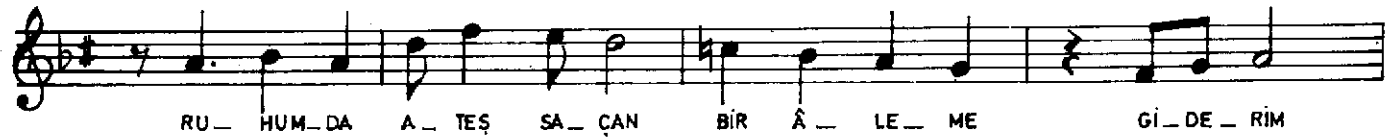
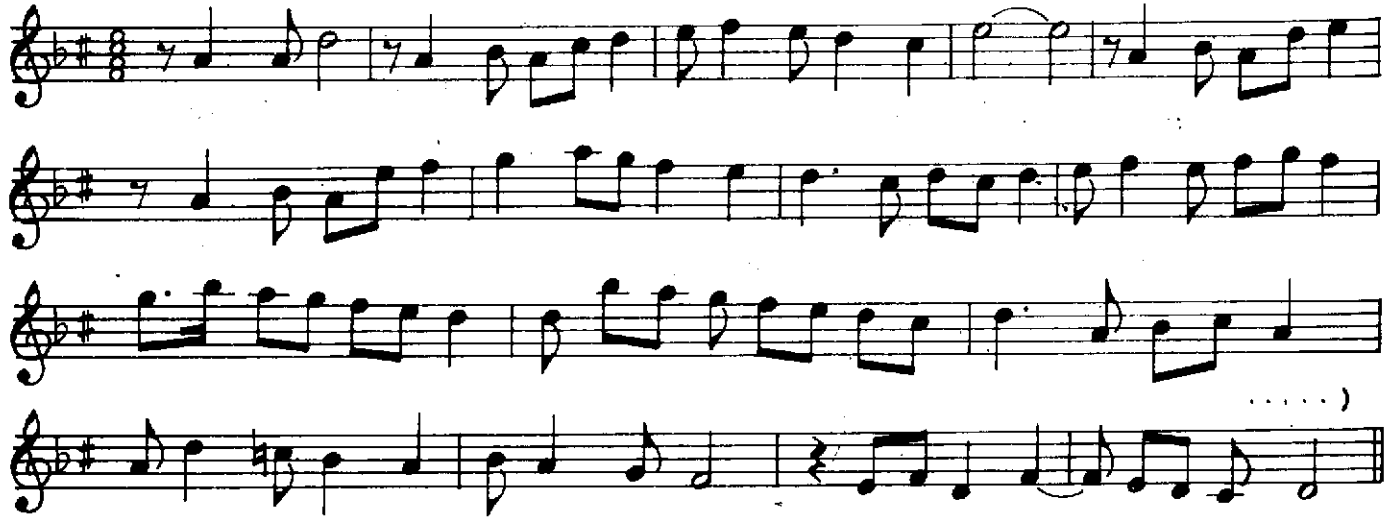
(RÜHUMDA ATEŞ SAÇAN BİR ÂLEME GİDERİM)

MÜZİK : YÜKSEL KİP

SÖZ : MELEK ÖKTEM

♩ = 120

(Ses.....)



RÜHUMDA ATEŞ SAÇAN BİR ÂLEME GİDERİM
YOLUM ÖYLE UZAK Kİ, GİDERİM ULAŞAMAM.
İÇİM ATEŞLE YANAR, TUTUŞMAK BİLMEZ DERM

YOLUM BENİM İÇİMDE, NE YAZIK Kİ AŞAMAM.
Melek Öktem